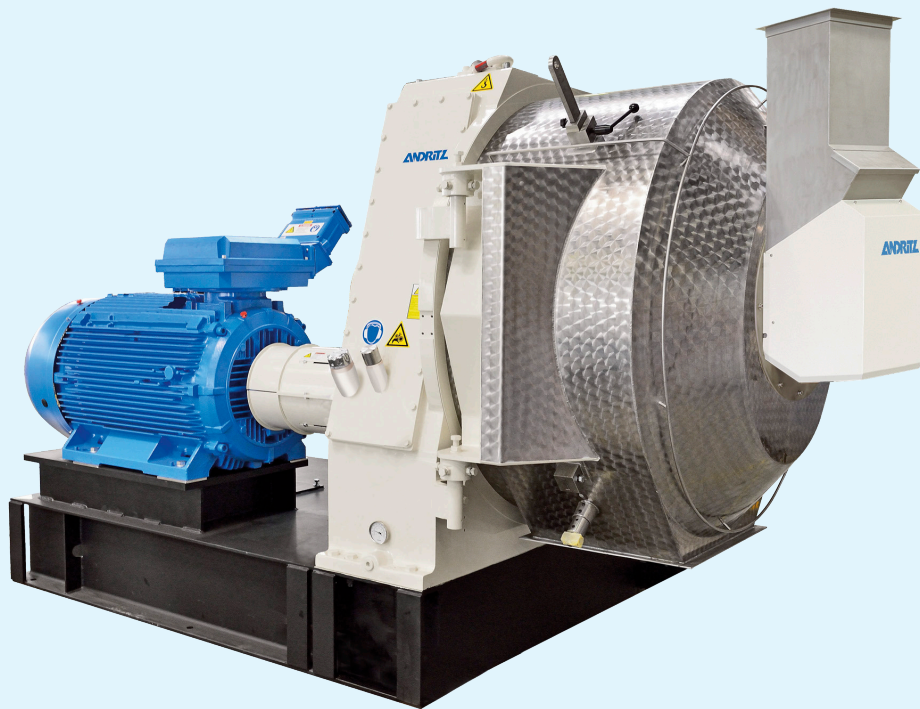


Gear-driven pellet mill

Type FeedMax G12-30 and G12-40



A fine-tuned design that offers highly efficient pelleting. The G12 series combines the best of current pellet mill technology with proven features from our long-established family of gear-driven pellet mills, offering the highest output per kWh in its class.

Robust, easy-to-maintain design

Single-reduction, precision helical gearing

delivers quieter operation, highly efficient power transmission factors, and longer life. Effective feed distribution – a unique, onepiece adjustable feed plough design for fast, easy adjustment – ensures uniformity of feed distribution across the die area and ahead of each roll. The taper die fit with self-piloting effect makes changing dies smooth and easy.

Replaceable wear rings in the housing reduce maintenance costs.

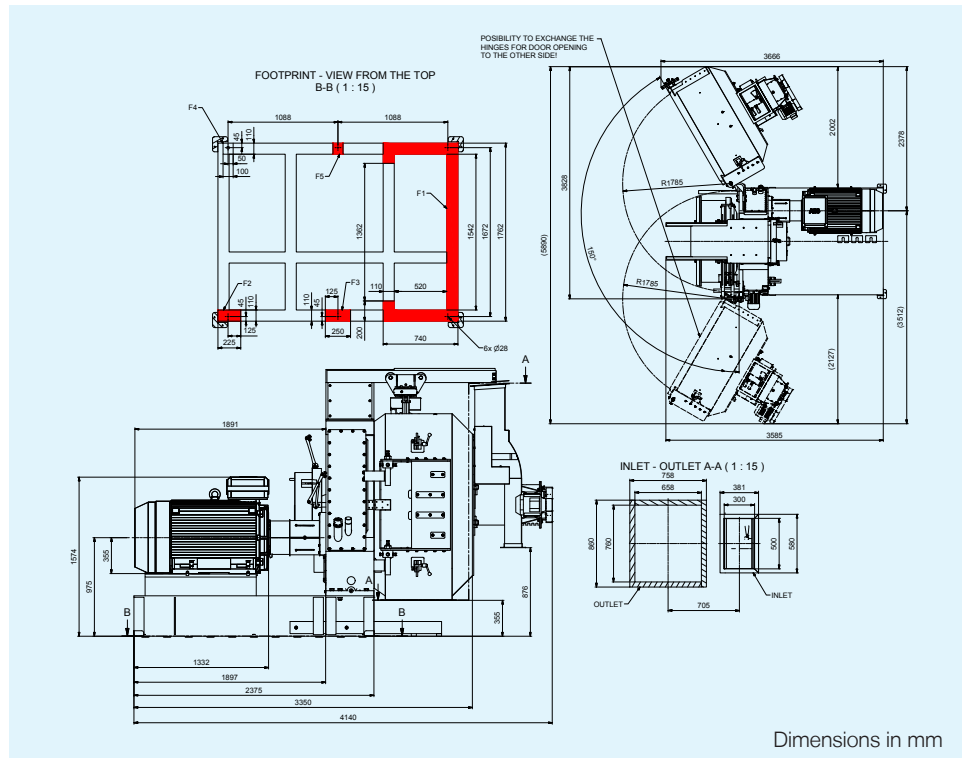
The G12 is equipped with a double walled and insulated pellet door, ensuring that no condensate forms and providing a very high hygiene standard.

Designed for longer life – all feed contact parts are made from stainless steel, including the roller main shaft and die housing.

Gear-driven pellet mill

Type FeedMax G12-30 and G12-40

- Shear pin hub array – protects the shaft against damage from foreign objects.
- Compact profile, small footprint, modular design – makes the mill easy to fit into your facility.
- The FeedMax G12 is equipped with a universal hinged pellet door (left/right) for maximum flexibility during installation.
- The FeedMax G12 comes with a 3-roll configuration and can also be configured with automatic roll adjustment
- The FeedMax G12 can be equipped with a pneumatic die crane, offering seamless movement.



Technical data	
FeedMax G12-30/G12-40	
Die inside diameter	Ø 1144 mm
Effective die width	324 / 398 mm
Effective press area	1.16 / 1.43 m ²
Total weight (Incl. 450 kW motor)	~14,100 / ~14,400 kg
Basic machine includes	<ul style="list-style-type: none"> ■ CE - approval ■ Gear box with ratio 9:8 ■ Base frame height 400 mm (prepared for motor size H=355) ■ Pellet chamber with bolt on universal hinge and universal door lock assembly ■ Prepared for automatic lubrication ■ 3 cutting knives

Configuration possibilities		
Detail	Options	Technical description
Roll adjustment	3 roll manual adjustment	Roll dia. Ø454 mm
	3 roll automatic adjustment	Roll dia. Ø454 mm
Roll slip control	3 roll automatic adjustment	Electrical system to detect slippage between die and roll shell
Inlet	Dump chute	Pneumatic activated bypass flap with permanent magnet
	Screw feeder	2.2 kW el-motor drive. Pneumatic actuated bypass flap
Die crane	For maintenance	Pneumatically operated
Tool kit	For maintenance	Containing torque wrench, allen key, lifting tools etc.
Oil cooling - Gearbox	Oil cooler unit	Cooling medium: Air
Electrical Equipment	24 VDC	Control voltage

Configuration possibilities				
Motor size	Frequency	RPM	Gearbox ratio	Die speed
250- 560 kW (IE3 & H=355)	50 Hz	~1490 o/min	9.8	9.1 m/s
	60 Hz	~1785 o/min	9.8	10.9 m/s

ANDRITZ Feed & Biofuel A/S
 Glentevej 5-7
 6705 Esbjerg, Denmark
 Phone: +45 72 160 300
 andritz-fb.dk@andritz.com
www.andritz.com/ft