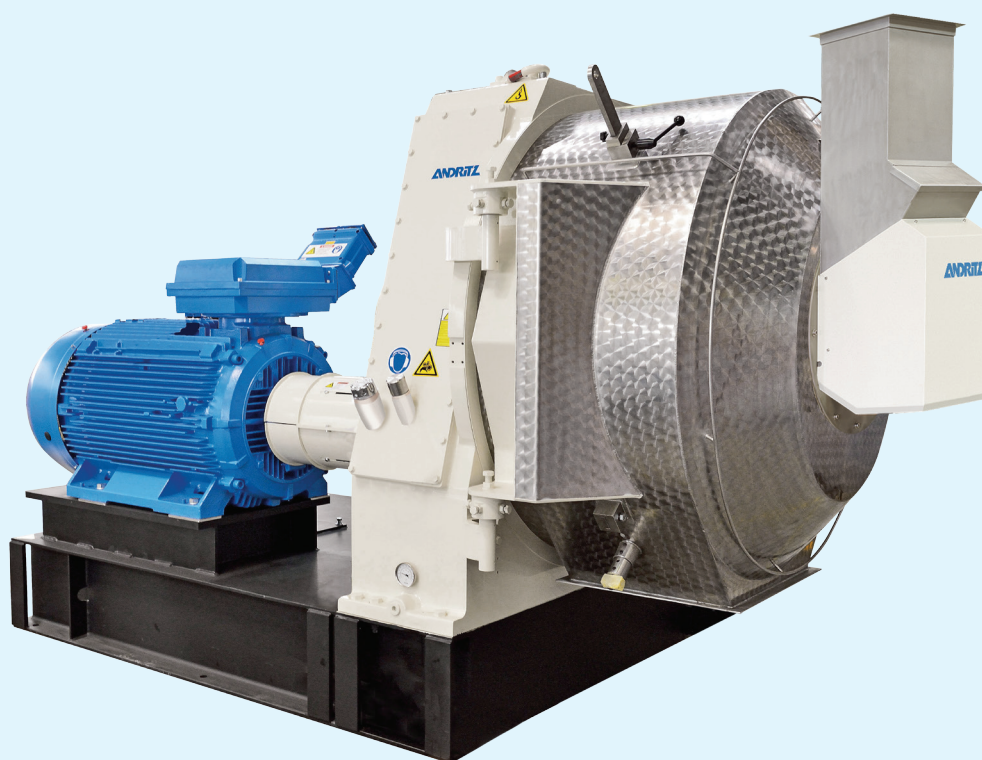


Pellet mill

Type FeedMax G9



A fine-tuned design that offers highly efficient pelleting. The G9 series combines the best of current pellet mill technology with proven features from our long-established family of gear-driven pellet mills, offering the highest output per kWh in its class.

Robust, easy-to-maintain design
Single-reduction, precision helical gearing

delivers quieter operation, highly efficient power transmission factors, and longer life. Effective feed distribution – a unique, onepiece adjustable feed plough design for fast, easy adjustment – ensures uniformity of feed distribution across the die area and ahead of each roll. The taper die fit with self-piloting effect makes changing dies smooth and easy.

Replaceable wear rings in the housing reduce maintenance costs.

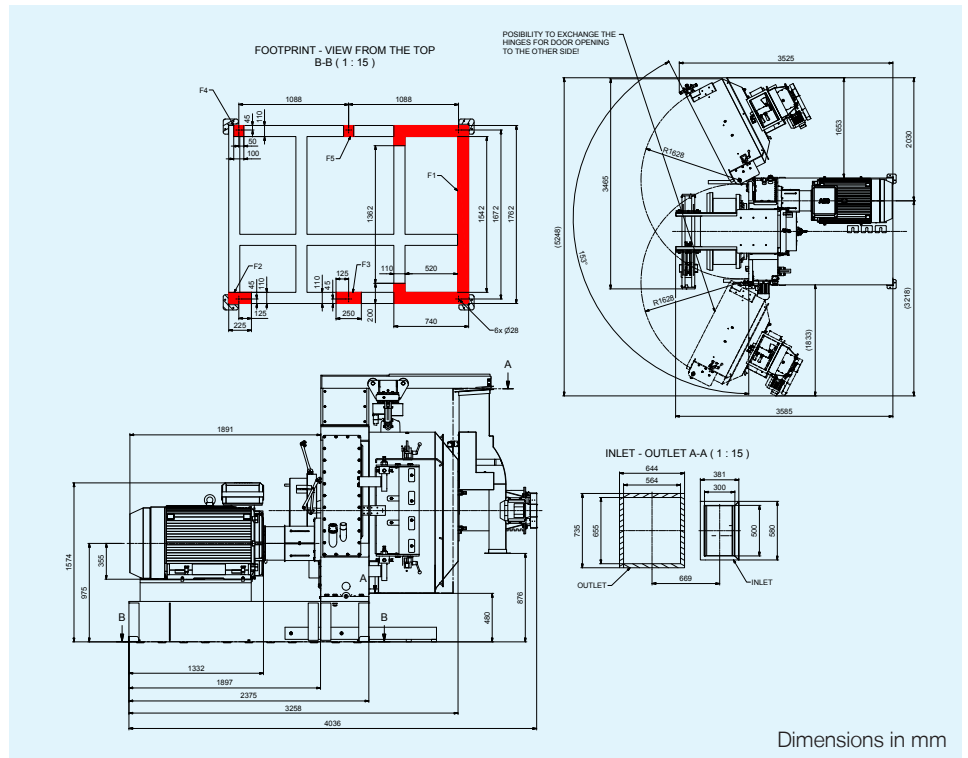
The G9 is equipped with a double walled and insulated pellet door, ensuring that no condensate forms and providing a very high hygiene standard.

Designed for longer life – all feed contact parts are made from stainless steel, including the roller main shaft and die housing.

Pellet mill

Type FeedMax G9

- Shear pin hub array – protects the shaft against damage from foreign objects.
- Compact profile, small footprint, modular design – makes the mill easy to fit into your facility.
- The FeedMax G9 is equipped with a universal hinged pellet door (left/right) for maximum flexibility during installation.
- The FeedMax G9 comes with a 2-roll configuration and can also be configured with automatic roll adjustment
- The FeedMax G9 can be equipped with a pneumatic die crane, offering seamless movement.



Technical data

FeedMax G9-30/G9-35	
Die inside diameter	Ø 910 mm
Effective die width	300 / 350 mm
Effective press area	0.85 / 0.99 m ²
Total weight (Incl. 450 kW motor)	~12,200 / ~12,400 kg
Basic machine includes	<ul style="list-style-type: none"> ■ CE - approval ■ Gear box with ratio 9:8 ■ Base frame height 400 mm (prepared for motor size H=355) ■ Pellet chamber with bolt on universal hinge and universal door lock assembly ■ Prepared for automatic lubrication ■ 2 cutting knives

Configuration possibilities

Motor size	Frequency	RPM	Gearbox ratio	Die speed
250- 560 kW (IE3 & H=355)	50 Hz	~1490 o/min	9.8	7.2 m/s
	60 Hz	~1785 o/min	9.8	8.7 m/s

Configuration possibilities

Detail	Options	Technical description
Roll adjustment	2 roll manual adjustment	Roll dia. Ø420 mm
	2 roll automatic adjustment	Roll dia. Ø405 mm
Roll slip control	2 roll automatic adjustment	Electrical system to detect slippage between die and roll shell
Inlet	Dump chute	Pneumatic activated bypass flap with permanent magnet
	Screw feeder	2.2 kW el-motor drive. Pneumatic actuated bypass flap
Die crane	For maintenance	Pneumatically operated
Tool kit	For maintenance	Containing torque wrench, allen key, lifting tools etc.
Oil cooling - Gearbox	Oil cooler unit	Cooling medium: Air
Electrical Equipment	24 VDC	Control voltage

ANDRITZ Feed & Biofuel A/S
 Glentevej 5–7
 6705 Esbjerg, Denmark
 Phone: +45 72 160 300
 andritz-fb.dk@andritz.com
www.andritz.com/ft